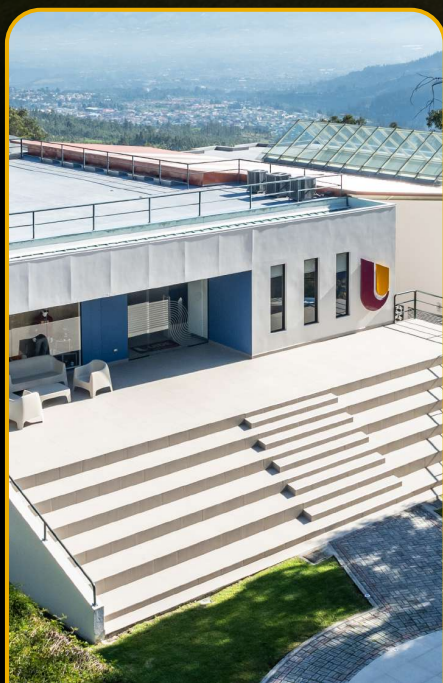




Powered by  
Arizona State University®

# Universidad Internacional del Ecuador (UIDE)

## Fact Sheet - Academic Year 2026





# OFFICE OF INTERNATIONAL AND INTERINSTITUTIONAL RELATIONS (ORII)

## General Information

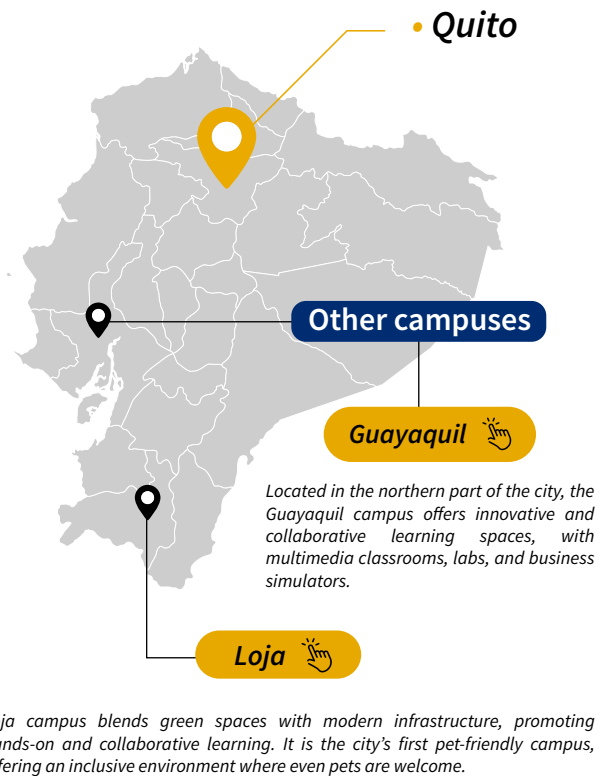
### Who are we?

Universidad Internacional del Ecuador (UIDE), **affiliated with Arizona State University (ASU)**, is a private university with campuses in Quito, Guayaquil, and Loja.

Student learning is enhanced through personalized interaction with both national and international faculty. The institution promotes a **truly global education**, with a strong focus on academic quality, innovation, and internationalization.

The Quito campus spans 36 hectares, offering one of the largest green areas in the metropolitan area, with a strong commitment to sustainability.

## Campuses



## QUITO CAMPUS FACILITIES AND SERVICES

- Free private shuttle service between Quito city and the campus
- Cafetería, Cargo Food and Coffee Spot
- UIDE Bakery
- Health Sciences Campus
- Library
- Gym
- Xavier Fernández Stadium
- Sport courts
- Student lounge
- Galo Plaza Auditorium





## Academic Information

Spring semester  
march - july

Fall semester  
september - january

Language of instruction  
spanish and english

## Undergraduate programs open to international students\*

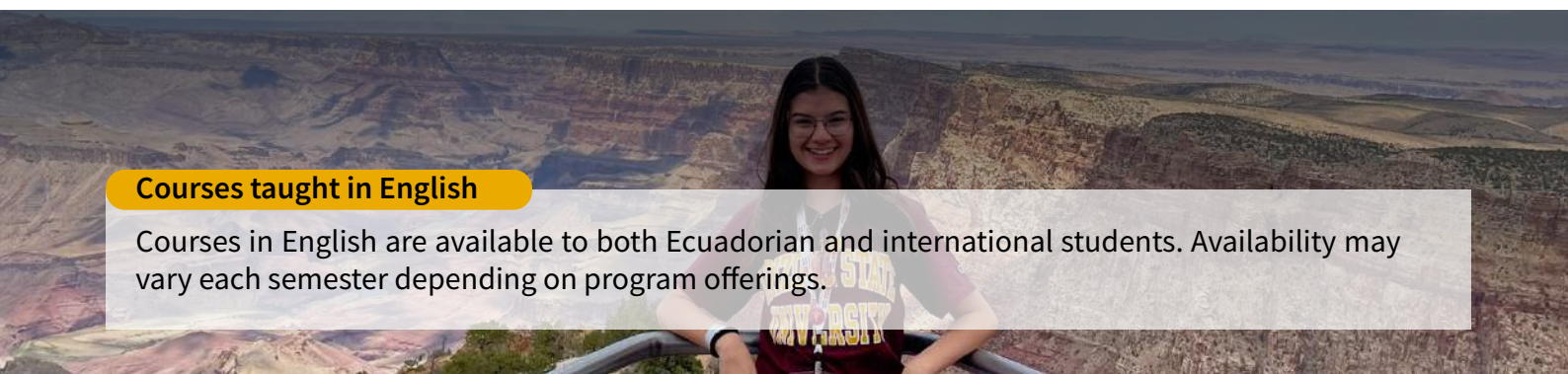
- Business Administration
- Architecture
- Communication and Digital Media
- Law
- Graphic Design
- Nursing
- Finance and Digital Business
- Physical Therapy
- Gastronomy
- Automotive Engineering
- Civil Engineering
- Information Systems Engineering
- Industrial Engineering
- Mechatronics Engineering
- Marketing
- Veterinary Medicine
- International Business
- Nutrition and Dietetics
- Dentistry
- Clinical Psychology
- Political Science and International Relations



*\* International students may enroll in courses across different programs, faculties, or fields of study.*

## Courses taught in English

Courses in English are available to both Ecuadorian and international students. Availability may vary each semester depending on program offerings.





# STUDENT LIFE

---

## Accommodation

- Exchange students can choose to live with a host family, in UIDE Student Residences, or find independent housing.
- If staying with a previously approved **host family**, the exchange coordinator will be responsible for connecting the student with the family and guiding them through the process.
- Living with a host family is part of the cultural immersion experience and offers students the opportunity to engage with locals and enjoy a safe, comfortable living environment.
- The host family stay includes: Wi-Fi, basic cleaning, laundry and breakfast and dinner.
- Cost: Between \$500 and \$600 per month

## UIDE STUDENT RESIDENCES\*

---

Fully equipped facilities with Wi-Fi, 24/7 security, shared kitchens and bathrooms.

*\* The campus is located approximately 40 minutes from downtown Quito.*

### Airport Pickup

---

Students who choose to stay in UIDE residences or with a host family will be welcomed upon arrival by either a university representative or a host family member.

### Buddy program

---

The **Buddies UIDE** program helps international students adapt to a new culture and integrate into the university community. This process pairs exchange students with regular students from the institution, who will guide them through university life and support them during their exchange.



Student Residences Guide

[CLIC HERE](#) 

### International Student Club

---

This club connects UIDE students with international students interested in cultural and language exchange. Activities are organized in collaboration with the School of Languages both on campus and around the city, including students from other UIDE campuses.

### Special entry fee for Galápagos National Park

---

As an exchange student at UIDE, you are eligible for a discounted entrance fee to the Galápagos National Park: only \$50, instead of the standard \$200 fee for foreign adults.

[LEARN MORE](#) 

# SPORTS AND RECREATION\*



• Basketball



• BMX



• Chess



• Dance



• Golf



• Volleyball



• Gym



• Equestrian



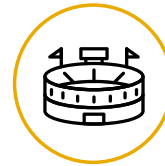
• Soccer



• Table Tennis



• Galo Plaza  
Auditorium



• Xavier Fernández  
University Coliseum

*\*International students may join sports classes and clubs at no additional cost (except for Equestrian).*

## TUITION FEES

No tuition or additional fees are charged to exchange students coming from partner institutions with bilateral agreements. Students from non-partner institutions will be charged tuition based on the duration of their stay and selected courses.



## ESTIMATED BUDGET FOR YOUR EXCHANGE IN QUITO

### Average daily expenses in Quito:

- 500ml bottle of water: \$0.5
- Lunch at UIDE cafeteria: \$4.00 (includes soup, main course, dessert, and juice)
- City bus: \$0.35
- Metro: \$0.45
- Daytime taxi ride within the city: minimum \$1.50, average \$5
- Dinner at a restaurant: \$20 – \$30

### Housing

**\$300 - \$400 per month**  
(shared apartment)

### Meals

**\$300 - \$400 per month**  
(if not staying with a host family)

# EXCHANGE APPLICATION

## THE ORII

The Office of International and Interinstitutional Relations (ORII) manages internationalization programs and promotes quality education through intercultural, international, and global dimensions.

## Nomination periods

Spring semester  
september - october

Fall semester  
march - april

*Students must apply in the semester prior to their exchange.*

## Nomination

Before applying, students must contact their home university's international office, which will send a nomination email to UIDE on their behalf.

## Application deadlines

Spring semester  
november 15

Fall semester  
may 15

*Once the nomination is accepted, the student must complete the exchange program application form and submit the required documentation*

## Admission requirements

### for international students

- Completion of at least two semesters at their home institution
- Minimum GPA: 2.8/4 or 80/100
- English level: minimum B2 for students taking courses in English
- International health insurance.



## Visa

UIDE will provide international students with a Letter of Acceptance and a migration letter, which must be presented upon entering the country to extend their stay for up to 180 days (according to the Regulations of the Human Mobility Law for academic purposes).

In accordance with the Regulations of the Human Mobility Law, individuals entering Ecuador for academic purposes may obtain a one-time authorization to stay for up to 180 days by presenting the official invitation letter issued by the educational institution.

To remain in Ecuador for more than 180 days, students must apply for a Temporary Residence – Student Visa.

Visa Requirements 



## Required documents for application

- Copy of passport
- Student's medical history
- Academic transcript
- English proficiency certificate (if applicable)
- Exchange application form (including planned course list).

## International Health Insurance

All exchange students must have valid international health insurance for the duration of their stay in Ecuador.

## CONTACT INFORMATION

Office of International and  
Interinstitutional Relations

Phone: (+593 2) 2985600 Ext. 2269 / 2262 / 2263

Website: [www.uide.edu.ec](http://www.uide.edu.ec)

Email: [orii@uide.edu.ec](mailto:orii@uide.edu.ec)

## ADDRESS

Universidad Internacional del Ecuador  
Office of International and Interinstitutional Relations  
Elon Musk Building, 3rd Floor  
Av. Jorge Fernández and Av. Simón Bolívar  
Collacoto Sector – 170102 – Quito, Ecuador

## OUR TEAM

Paola López  
[plopez@uide.edu.ec](mailto:plopez@uide.edu.ec)  
*Director*

Diana Baldeón  
[dbaldeon@uide.edu.ec](mailto:dbaldeon@uide.edu.ec)  
*Coordinator*

Sirahí Bastidas  
[sbastidas@uide.edu.ec](mailto:sbastidas@uide.edu.ec)  
*Exchange Assistant*